

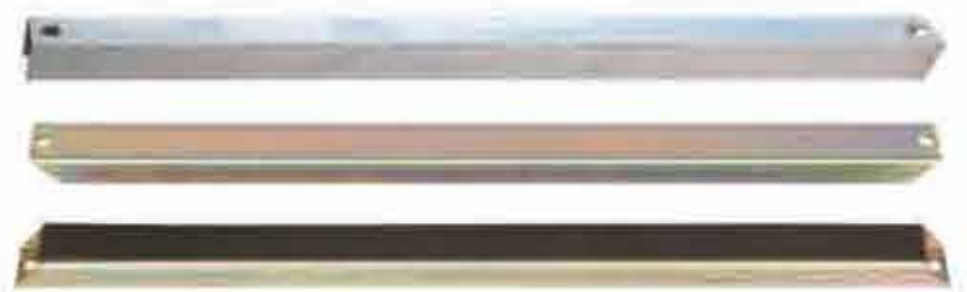


# RAISED ACCESS FLOORING CATALOGUE



**TREE RING FLOORS**  
Omar al tayer warehouse  
No.13, ras al khor, dubai  
[www.treeringfloors.com](http://www.treeringfloors.com)  
[info@treeringfloors.com](mailto:info@treeringfloors.com)

# ALUMINUM ACCESS FLOOR



## Feature

Aluminum access floor is die-casting with aluminum ingot which is light and anticorrosion.

Aluminum access floor is widely used in the Data Center and Industrial Clean Room.

## Specifications

Type	Material	Size	Concentrated	Impact Load	Ultimate Load	Uniform Load	Rolling Load		Standard
International		mm	N	N	N	N/M <sup>2</sup>	10times	10000times	
A1250	ADC12	600×600	≥5600	670	≥11200	≥33100	4500	3600	SJ/T 10796-2001
A1500	ADC12	600×600	≥6700	670	≥13400	≥42600	5600	4500	
A3000	ADC12	600×600 610×610	≥13300	880	≥26600	≥66900	11100	8900	



# ALUMINUM HONEYCOMB ANTI-STATIC PANEL



## Size

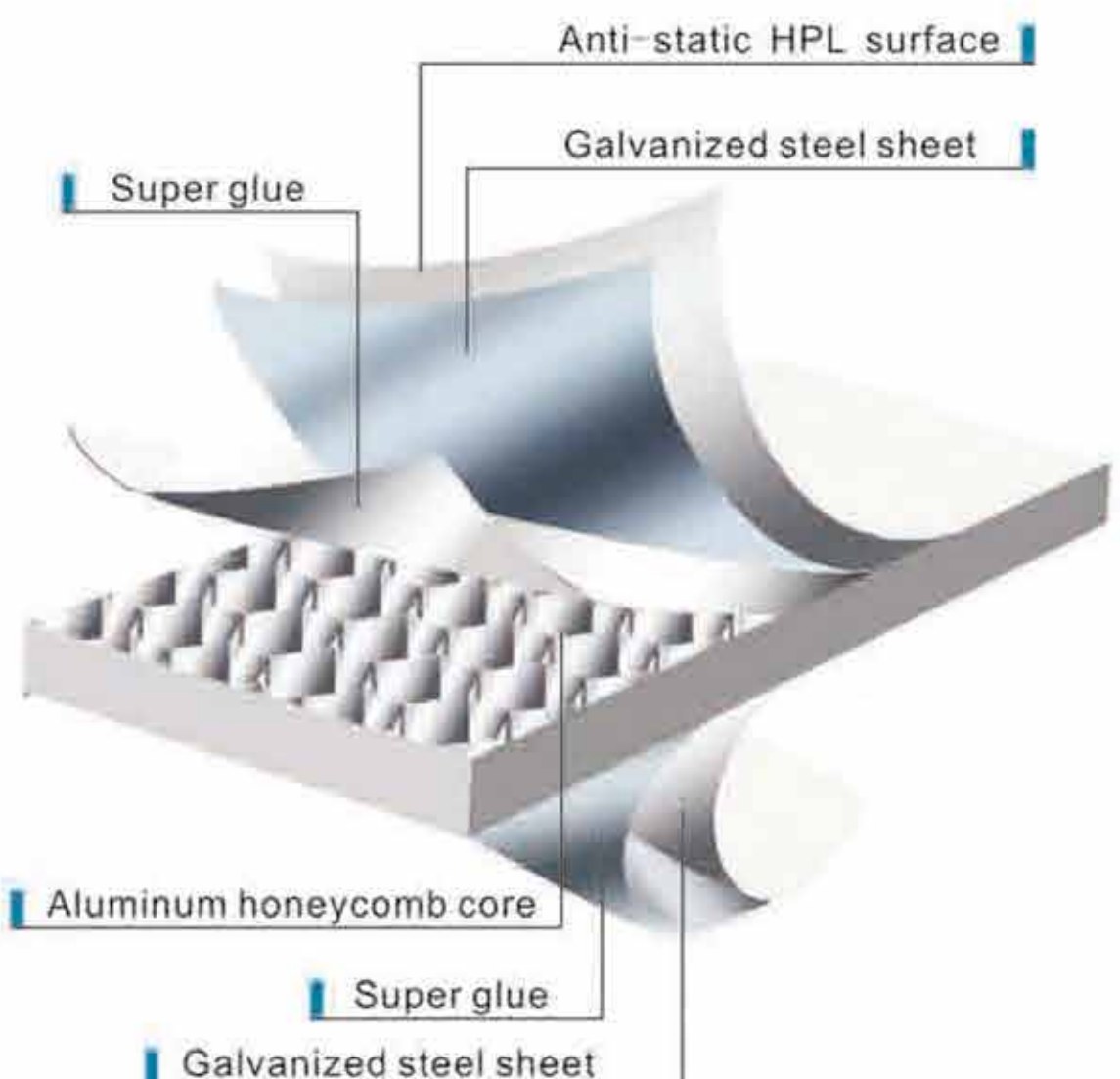
600×600×30MM

## Structure

Aluminum honeycomb anti-static floor is a composite raised movable floor with full metal. Aluminum honeycomb structure is inside. Customers can choose HPL cover according to their need. The edges are fixed with black conductive edge strip.

## Feature

- Light product, flame retardant, sound insulation, heat insulation, moistureproof, anti-corrosive, fire prevention, durable and easy to transport
- Green environmental protection, recyclable, can be used for second time



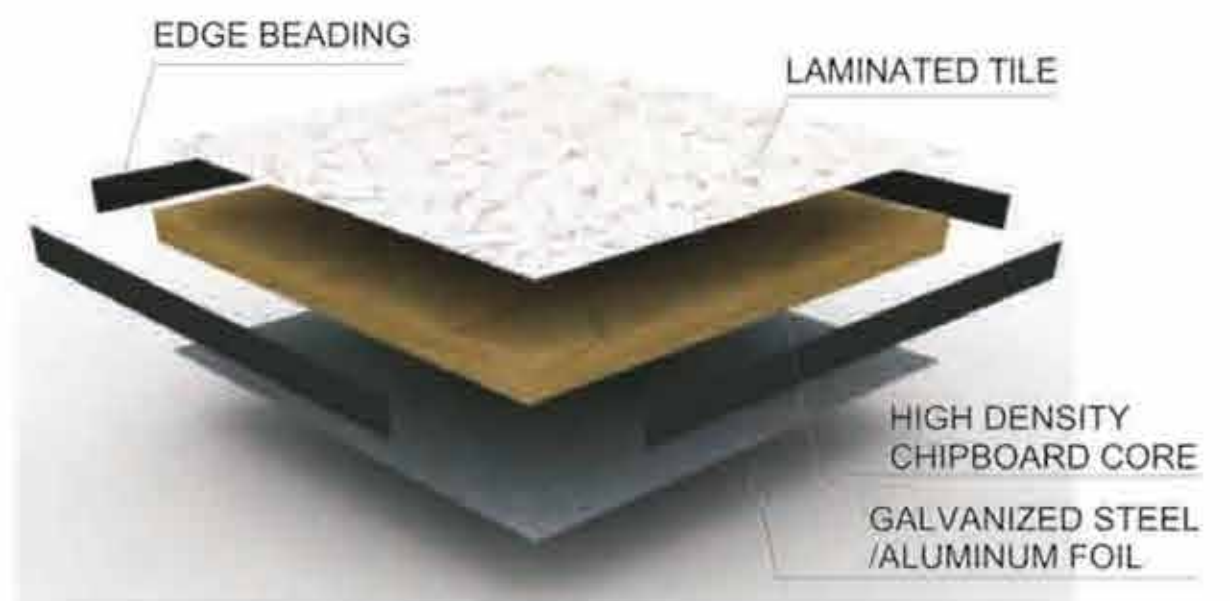
# WOODCORE ACCESS FLOOR

# ABS SEALED PANEL



## Structure

Woodcore access floor consists of high-density (720Kg/m<sup>3</sup>) chipboard. Galvanized steel sheet/aluminum foil is bonded to the bottom of the chipboard. HPL or PVC is stuck to the top of the chipboard, four edges are sealed with ABS edging strip.



## Product property

Panel weight : 5 - 15kgs/pc  
 Panel thickness: 20-40mm  
 EN12825 dimension tolerance: 2  
 EN1366-6 fire rating: 15minutes  
 EN ISO140-12 sound insulation: 50



## Specifications

Typical	Size	Concentrated	Impact Load	Ultimate Load	Uniform Load	Repeating Load		Standard
International	mm	N	N	N	N/M <sup>2</sup>	10times	10000times	
W400	500 × 500/600 × 600/610 × 610	≥ 1800	410	≥ 5400	≥ 9800	1200	700	SJ/T 10796-2001
W668	500 × 500/600 × 600/610 × 610	≥ 3000	670	≥ 9000	≥ 12500	2200	1500	
W800	500 × 500/600 × 600/610 × 610	≥ 3600	670	≥ 10800	≥ 19800	3000	2200	
W1000	500 × 500/600 × 600/610 × 610	≥ 4500	670	≥ 13500	≥ 23300	3600	3000	



# WOODCORE ACCESS FLOOR

## ENCAPSULATED PANEL



### Structure

Floor panel is encapsulated to provide full steel encasement, steel to be high quality galvanized steel sheet as top and bottom. High density chipboard as the core.



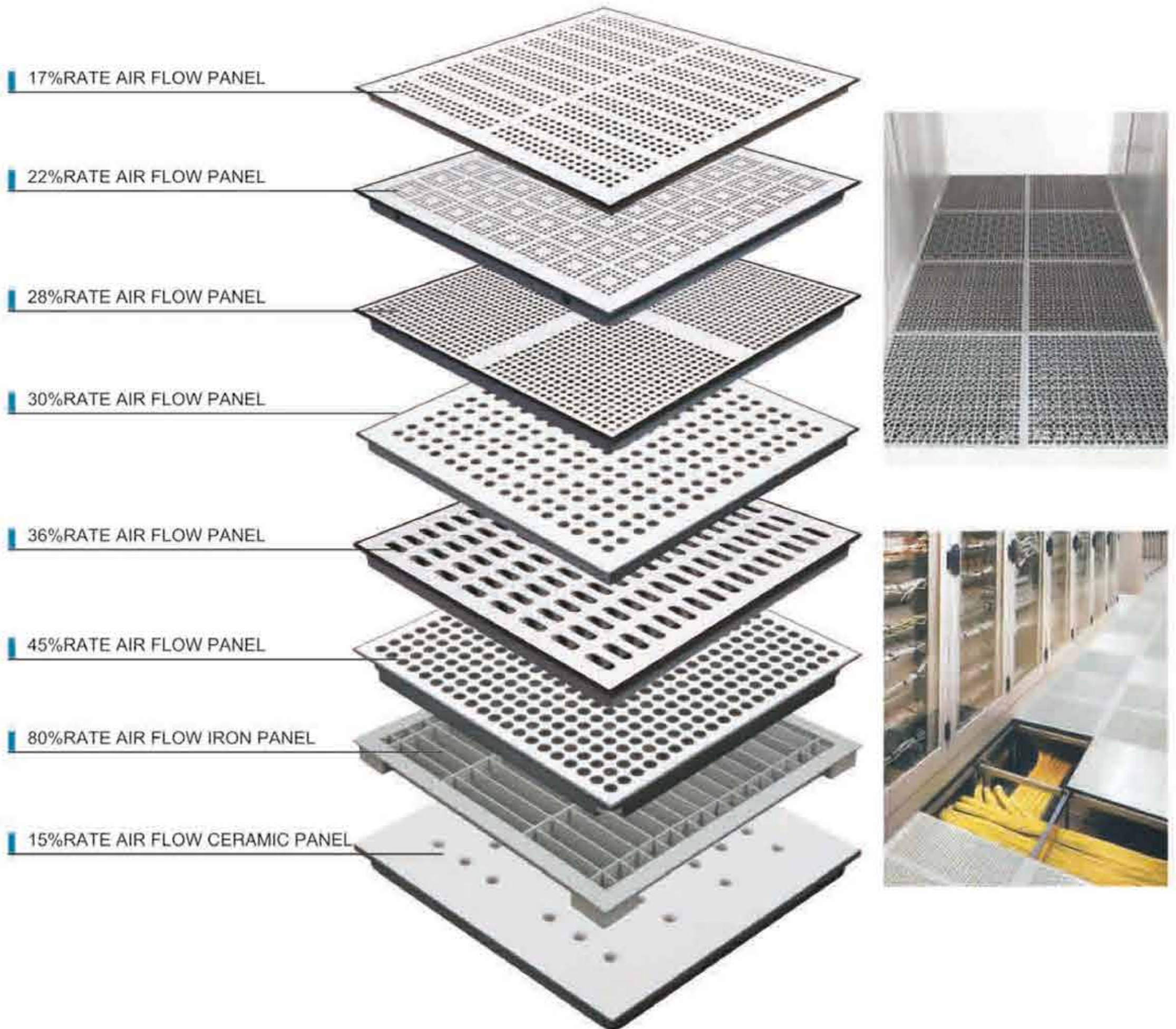


# AIR FLOW SYSTEM



## Feature

Steel perforated panel is specially designed to allow air flow through the access floor up to the equipment.





# AIR FLOW SYSTEM



Intertek

SGS



DC55



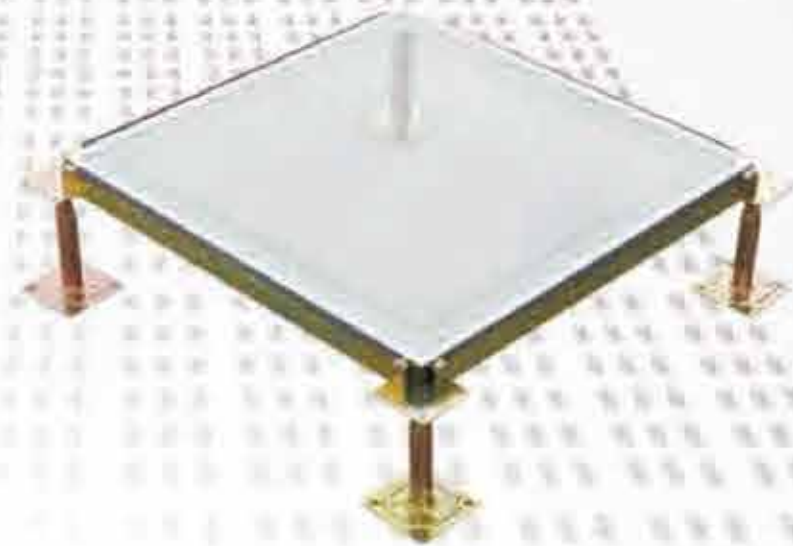
DC56



DC68



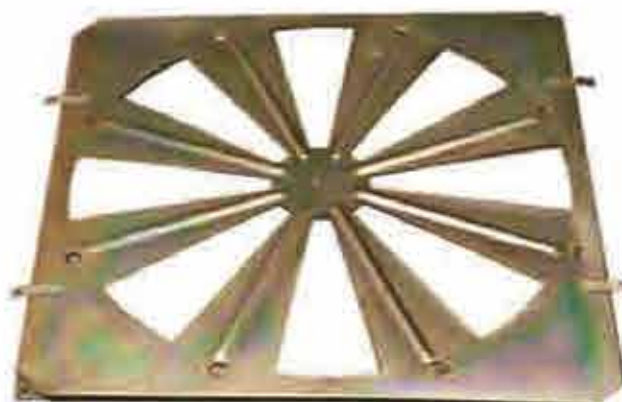
ALUMINUM AIR GRILLE WITH DAMPER



GLASS PANEL



SLIDING DAMPER



ROUND DAMPER



OPPOSED BLADE DAMPER



# FLOORING ACCESSORIES



presents an extensive choices of accessories, including electrical boxes, grommets, panel lifters and air diffuser and so on:



AIR DIFFUSER



ROUND BRUSH GROMMET



SURFACE BRUSH GROMMET



SPLIT INTEGRAL GROMMET



Diameter 15cm

Diameter 19.5cm

ROUND GROMMET



SQUARE GROMMET



INTEGRAL GROMMET



SINGLE/DOUBLE CUP LIFTER



OUTLET BOX B



OUTLET BOX C



# UNDER STRUCTURE

ISO 9001  
K CE PSB Intertek SGS



STRINGERS

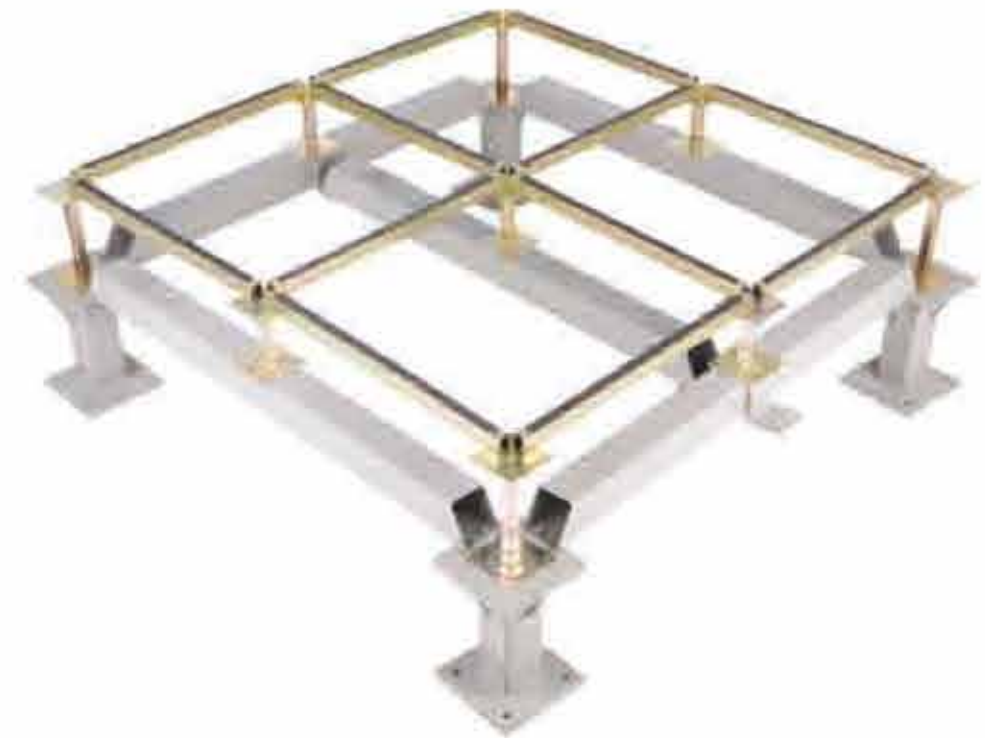


HEAVY DUTY PEDESTAL



C01 C02 C03 C04

CROSS HEAD PEDESTAL



SEISMIC PEDESTAL



F06 F01 F02 F05

FLAT HEAD PEDESTAL



W03 W05 W07 W09

ROUND HEAD PEDESTAL



RAMP PEDESTAL



PEDESTAL BRACING



BRACING CLAMP



# GRC FLOOR



## Structure

GRC floor uses high quality cement and gypsum powder as main raw materials, combined with reinforcing fiber, not only keep the raw material itself superior fire resistance, more raised the bearing of products. Because the floor did not use a metal material on the surface, the foot feeling is closer to the floor entity and creates a down to earth feel.

GRC floor small size, light weight, not only can be more convenient in the construction, but also reduces the load of the raised floor system to the floor, making the service life of the floor more durable.

GRC floor plate is more light, combined with adjustable height, improves the space utilization of underfloor wiring. Easy installation, high demension accuacy and excellent interchangeability. Recyclable, save resources and protect the environment.



## Specifications

Type	Size	Concentrated	Impact Load	Ultimate Load	Uniform Load	Rolling Load		Standard
International	mm	N	N	N	N/M <sup>2</sup>	10times	10000times	SJ/T 10796-2001
GC668	500 × 500 × 26	≥3000	670	≥9000	≥12500	2200	1500	
GC800	500 × 500 × 26	≥3600	670	≥10800	≥19800	3000	2200	
GC1000	500 × 500 × 26	≥4500	670	≥13500	≥23300	3600	3000	



# FRC FLOOR



## Structure

FRC access floor is made of silicate, inorganic fiber, mineral fiber, quartz sand, etc, once molded after high pressure.

The panel has no volatile toxic chemicals and radiation, and can be decomposed completely. Its service time is the same as the building.

Each panel has hole for wires, four corners supported by pedestals, with no stringers.

Good flatness and solid feeling. Finishes can be laminate flooring, PVC, carpet, etc.



## Specifications

Type	Size	Compressive	Impact Load	Ultimate Load	Uniform Load	Rolling Load		Standard
International	mm	N	N	N	N/M <sup>2</sup>	10times	10000times	SJT
FC668	500 × 500 × 25	≥3000	670	≥9000	≥12500	2200	1500	10796-2001



# CALCIUM SULPHATE ACCESS FLOOR

## ENCAPSULATED PANEL



Intertek



### Structure

Encapsulated with high density fiber calcium sulphate core.

### Product property

Panel weight : 10 -22kgs/pc

Panel thickness: 25-40mm

EN12825 dimension tolerance: 1

EN13501: Class A1

EN1366-6 fire rating: 2hours

ASTM E492-09: IIC55

ASTM E283-04 25Pa:  $\leq 0.3L/s \cdot m^2$

NIOSH9002: Asbestos-free

QBIT 2591-2003: Antibacterial

LEED assessment report available



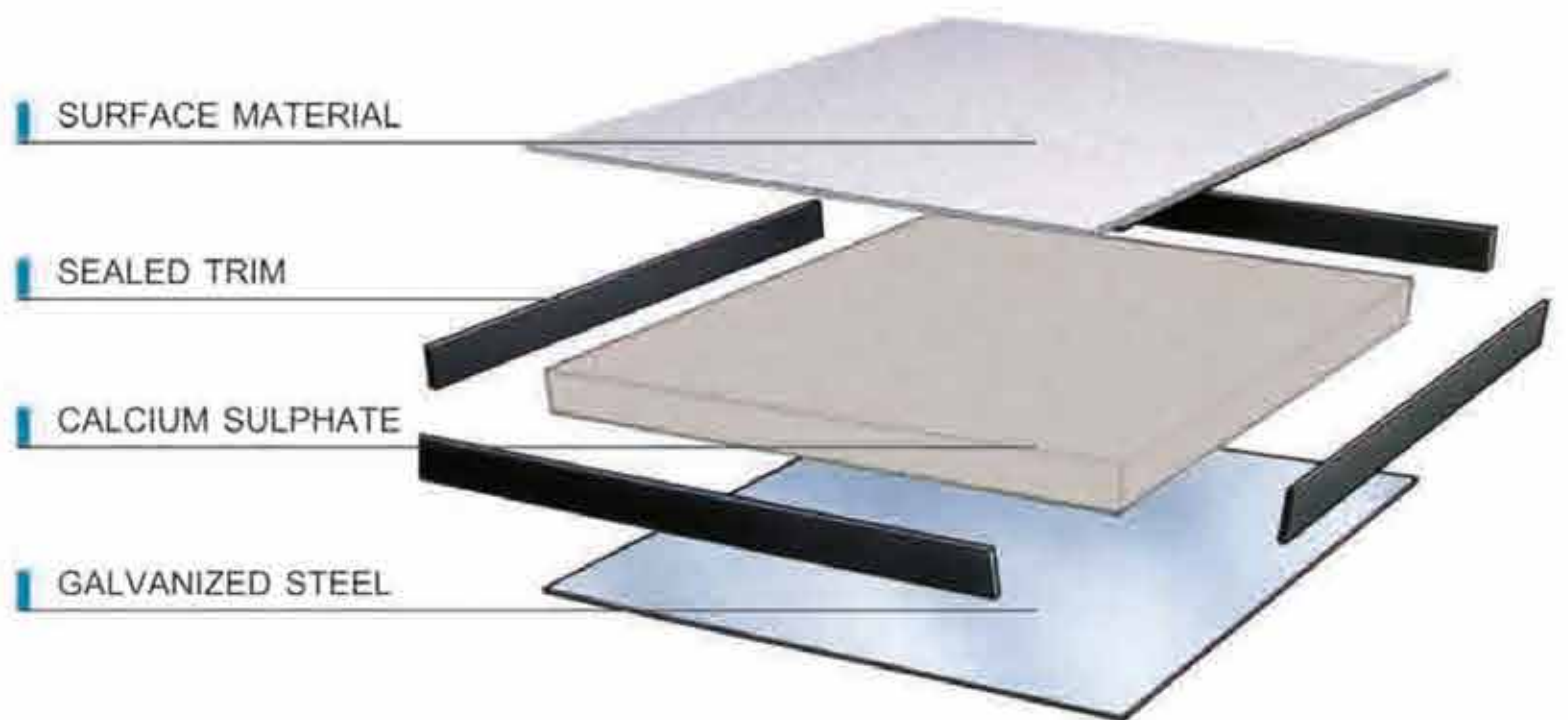
# CALCIUM SULPHATE ACCESS FLOOR

## ABS SEALED PANEL



### Structure

With high density calcium sulphate core, panel surface can be laminated with HPL, conductive PVC, bottom with quality galvanized steel / aluminum foil, four sides with conductive ABS edging.



### Specifications

Type	Size	Concentrated	Impact Load	Ultimate Load	Uniform Load	Balling Load		Standard
International	mm	N	N	N	N/M <sup>2</sup>	10times	10000times	
C1000	500 × 500/600 × 600/610 × 610	≥4500	670	≥13500	≥23300	3600	3000	SJ/T 10796-2001
C1250	500 × 500/600 × 600/610 × 610	≥5600	670	≥16800	≥33100	4500	3600	



# STEEL CEMENTITIOUS PANEL

# LAMINATE PANEL



## Feature

- Used for computer room, data center and communication center
- Excellent rolling load & ultimated load performance
- Light weight cement makes panels solid and quiet
- Black/grey epoxy paint finish for long time protection
- Class A flame spread and smoke development rating
- Convenient installation supplies an excellent solution for office integrity, wiring and date cable service

## Wide range finishes available

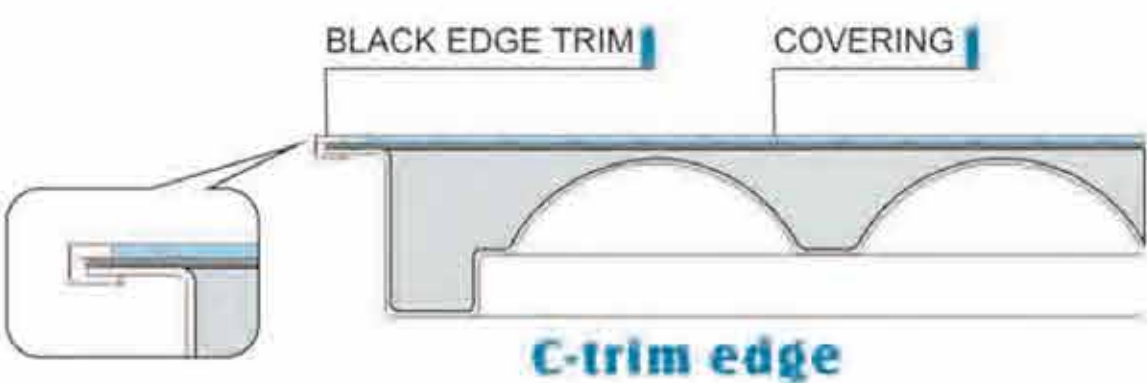
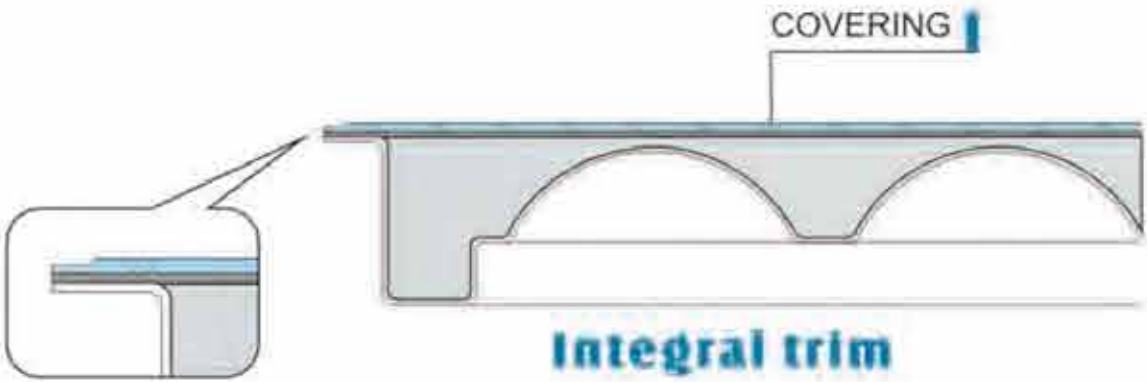
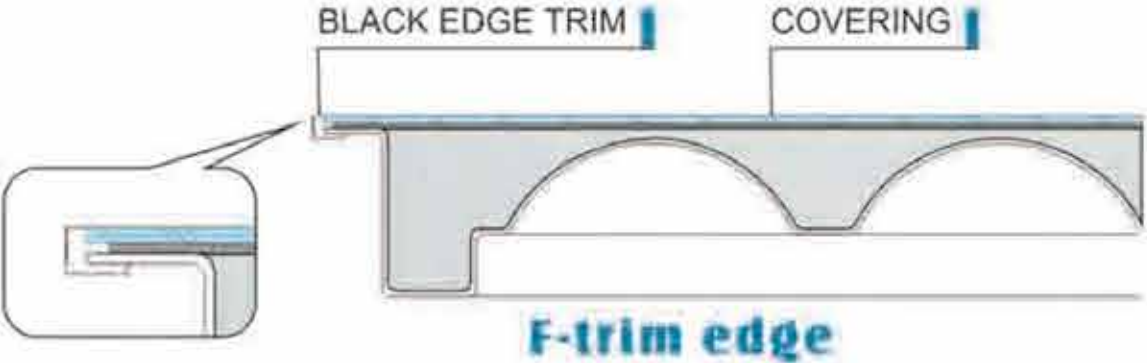
- High Pressure Laminate
- Conductive vinyl tile
- Ceramic
- Carpet tile
- Linoleum
- Granite/Marble





# STEEL CEMENTITIOUS PANEL

# LAMINATE PANEL





# STEEL CEMENTITIOUS PANEL

## 60 OA PANEL



### Structure

60 OA panel is made of steel plate, top to be SPCC material, bottom to be ST14 material, after pan formed and joined together by resistance welding, the panel is coated with epoxy paint, then infilled with light cement.

### Product property

Panel weight : 12 -22kgs/pc  
ASTM E136-11 and BS476-4: Non  
combustible  
ASTM E84-14: Class A  
EN13501: Class A1  
ASTM E492-09: IIC58  
ASTM E283-04 25Pa:  $\leq 0.3L/s \cdot m^2$   
NIOSH9002: Asbestos-free  
LEED assessment report available



# STEEL CEMENTITIOUS PANEL

## 60 OA PANEL



### Structure

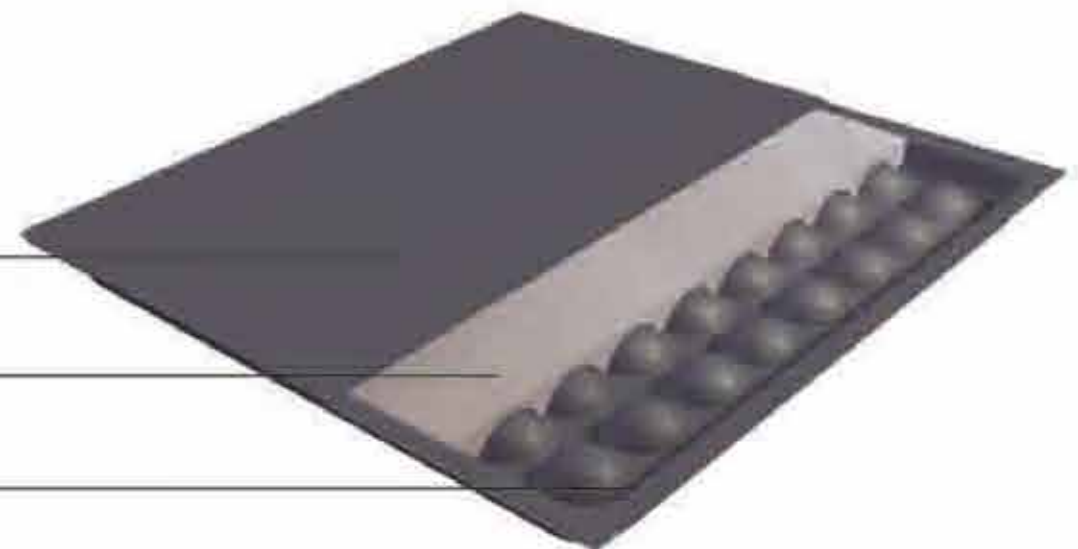
- Screw down design supports the system effectively and makes the installation easily and stable.
- The load is transferred directly onto the center of pedestal column.
- Different types of understructures are available for install OA panel system.



SPCC steel

LIGHT CEMENT

ST14 STEEL



### Specifications

Type	Size	Compressive Load	Impact Load	Ultimate Load	Uniform Load	Rolling Load	Standard
International	mm	N	N	N	N/M <sup>2</sup>	10times 10000times	
SC668	600 × 600 × 35	≥ 3000	670	≥ 9000	≥ 12500	2200 1500	SJT 10796-2001
SC800	600 × 600 × 35	≥ 3600	670	≥ 10800	≥ 19800	3000 2200	
	610 × 610 × 35						
SC1000	600 × 600 × 35	≥ 4500	670	≥ 13500	≥ 23300	3600 3000	
	610 × 610 × 35						
SC1250	600 × 600 × 35	≥ 5600	670	≥ 16800	≥ 33100	4500 3600	
	610 × 610 × 35						
SC1500	600 × 600 × 35	≥ 6700	670	≥ 20100	≥ 42600	5600 4500	
	610 × 610 × 35						
SC2000	600 × 600 × 35	≥ 8900	780	≥ 26700	≥ 49800	6700 5600	
	610 × 610 × 35						
SC2500	600 × 600 × 35	≥ 11100	780	≥ 33300	≥ 58300	8900 6700	
	610 × 610 × 35						
SC3000	600 × 600 × 35	≥ 13300	880	≥ 39900	≥ 66900	11100 8900	
	610 × 610 × 35						



# STEEL CEMENTITIOUS PANEL

## 50 OA PANEL



### Structure

50 OA panel is made of steel plate, top to be SPCC material, bottom to be ST14 material, after pan formed and joined together by resistance welding, the panel is coated with epoxy paint, then infilled with light cement.

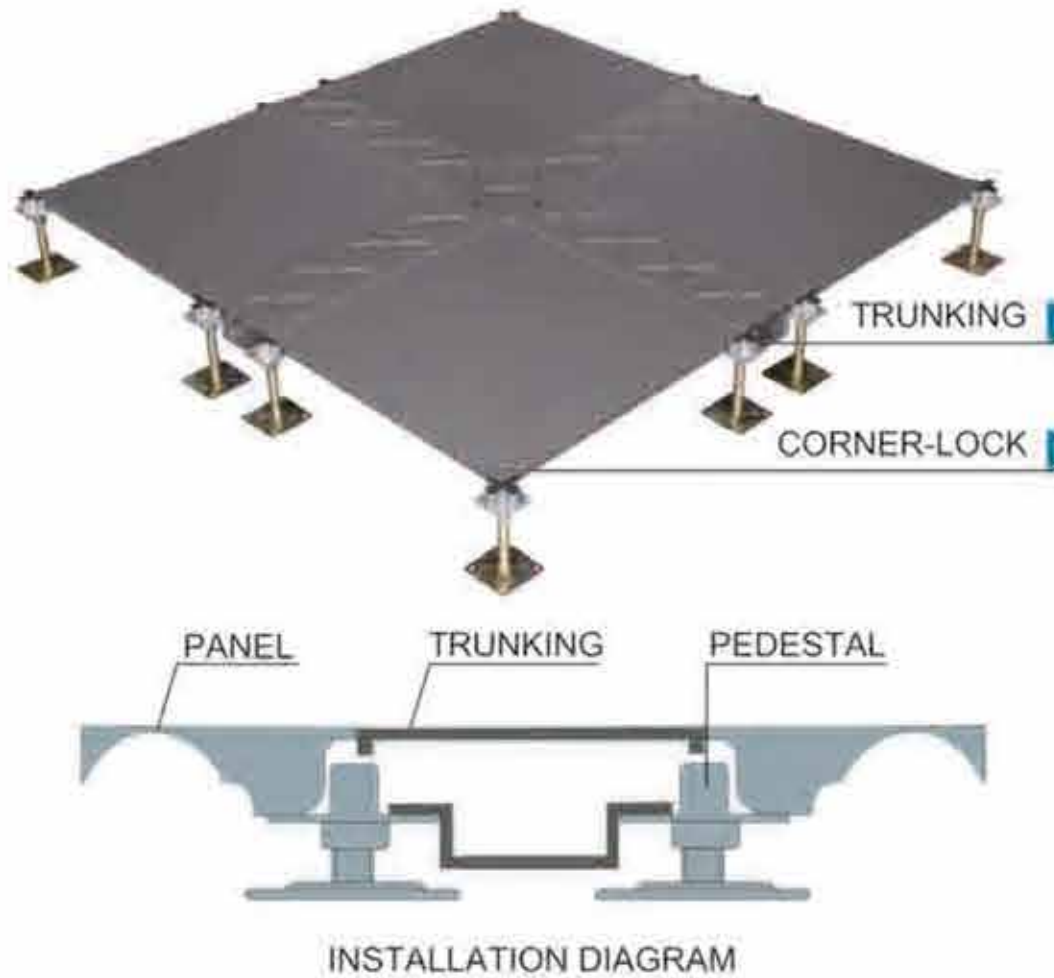
### Product property

Panel weight : 8 - 12kgs/pc  
ASTM E136-11 and BS476-4: Non combustible  
ASTM E84-14: Class A  
EN13501: Class A1  
ASTM E492-09: IIC58  
ASTM E283-04 25Pa:  $\leq 0.3L/s \cdot m^2$   
NIOSH9002: Asbestos-free  
LEED assessment report available



# STEEL CEMENTITIOUS PANEL

## 50 0A PANEL



### Wire Trunking System

A workstation can be easily and quickly relocated with cable management without disruption. Convenient for connecting wire at any point without cutting floor. Suitable for all kinds of plug socket terminals. Adjustable wire-connected location.



50 (front)



50 (back)



50-C2 (front)



50-C2 (back)

### Specifications

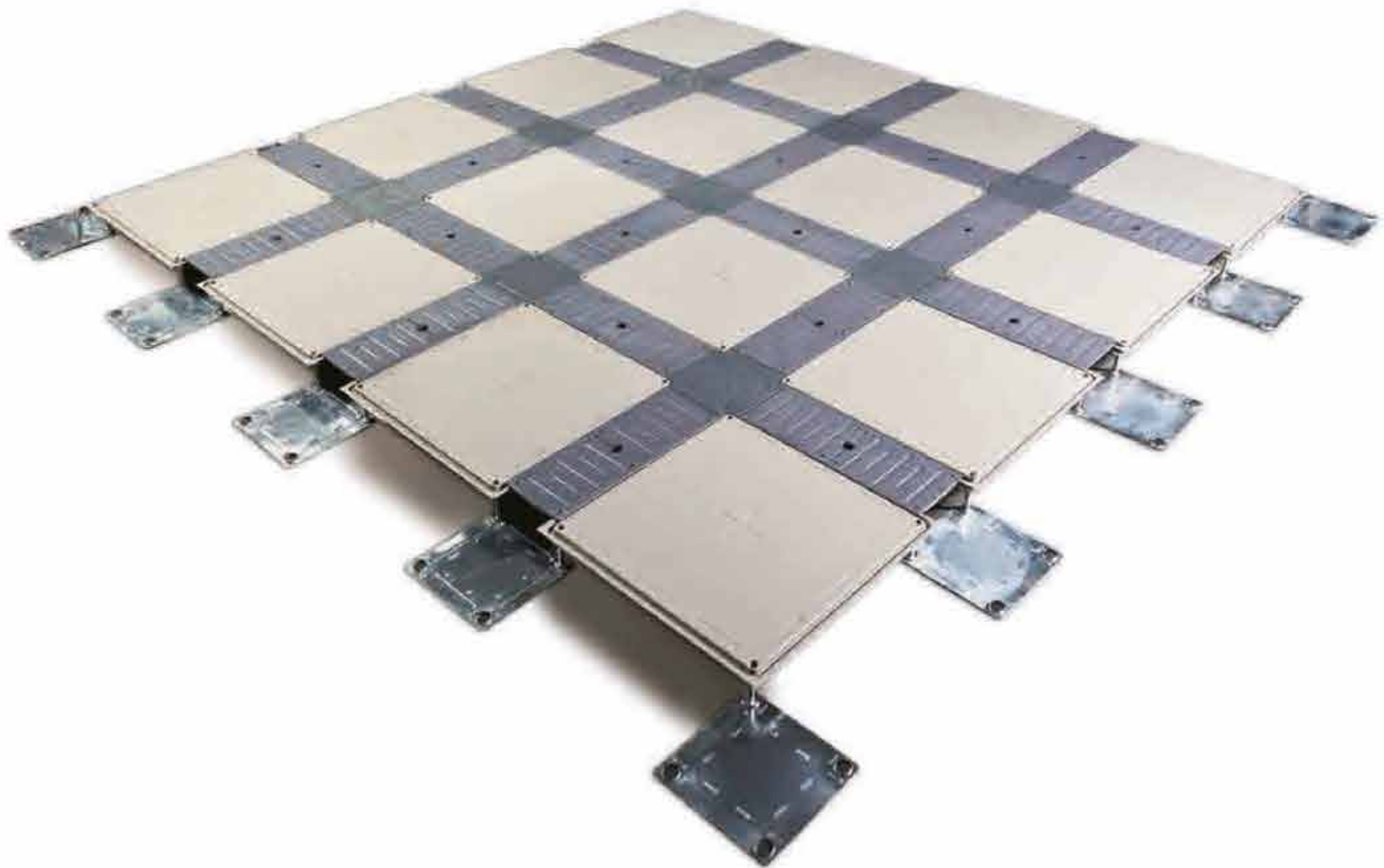
Type	Size	Concentrated	Impact Load	Ultimate Load	Uniform Load	Bending Load		Standard
International	mm	N	N	N	N/M <sup>2</sup>	10times	10000times	SJ/T 10796-2001
SC668	500 × 500 × 28	≥3000	670	≥9000	≥12500	2200	1500	
SC800	500 × 500 × 28	≥3600	670	≥10800	≥19800	3000	2200	
SC1000	500 × 500 × 28	≥4500	670	≥13500	≥23300	3600	3000	



# STEEL CEMENTITIOUS PANEL

## 50-B PANEL

ISO 9001 KGS CE PSB Intertek SGS



### Structure

50-B panel is elevated innovation and breakthrough, comparing with traditional access floor system. The new 50-B series has the same advantage of 50 panel, but more convenient, environmental protected.





# STEEL CEMENTITIOUS PANEL

## 50-B PANEL



### Product Description

50-B panel is supported by 4 pedestals and flank cap and central cap.

### Feature

- Environmental protected, economical and recyclable.
- Light weight, 1/2 to 2/3 of common access floor.
- Good conductivity and air leakage, flexible trunks for wires and cables.
- Specially designed for low finished flooring height.



CENTER CAP

FLANK CAP

TRUNKING

OUTLET BOX

BASE CONNECTOR

SCREW PEDESTAL

### Trunking

Trunking for wires is one of the advantages of trunking floor. Cover flank covers on basic panel edges after lying wires in trunks. Each panel stands separately, making it very convenient to lie flank cover before or after wires.



### Specifications

Type	Size	Concentrated	Impact Load	Uniform Load	Uniform Load	Rolling Load		Standard
International	mm	N	N	N	N/M <sup>2</sup>	10times	10000times	
SC668	500 × 500 × 25	≥3000	670	≥9000	≥12500	2200	1500	SJ/T 10796-2001
SC800	500 × 500 × 25	≥3600	670	≥10800	≥19800	3000	2200	
SC1000	500 × 500 × 25	≥4500	670	≥13500	≥23300	3600	3000	



# COVERING MATERIAL



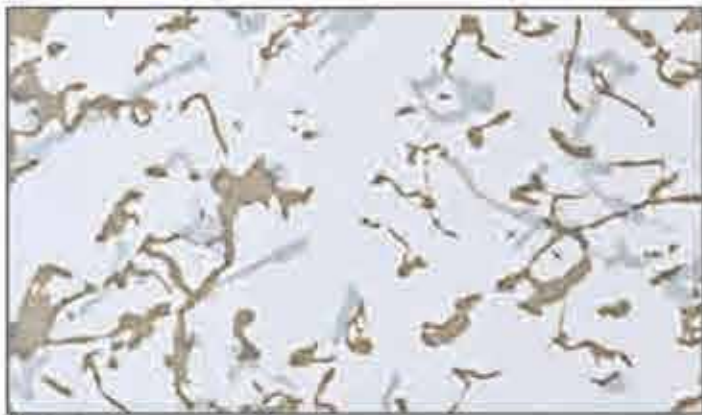
Intertek **SGS**



## High Pressure Laminate(HPL)

A Comprehensive selection of FLOOR covering materials are available including more colors of HPL, Vinyl and other interior finishes, to satisfy customer's different requirements.

Please contact with us if you want other covering material which is not listed below.



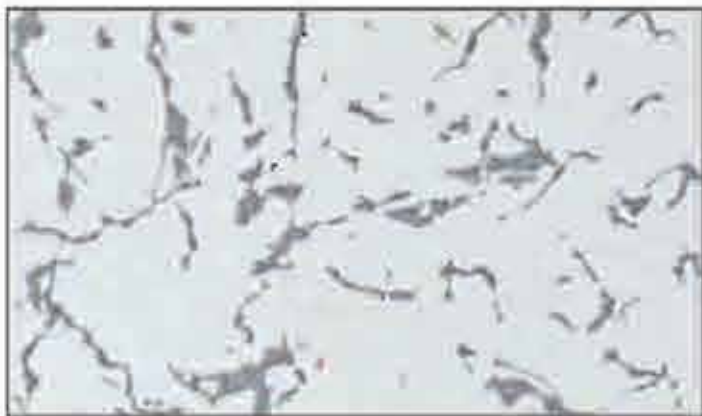
8192



8193



8194



8191



8132



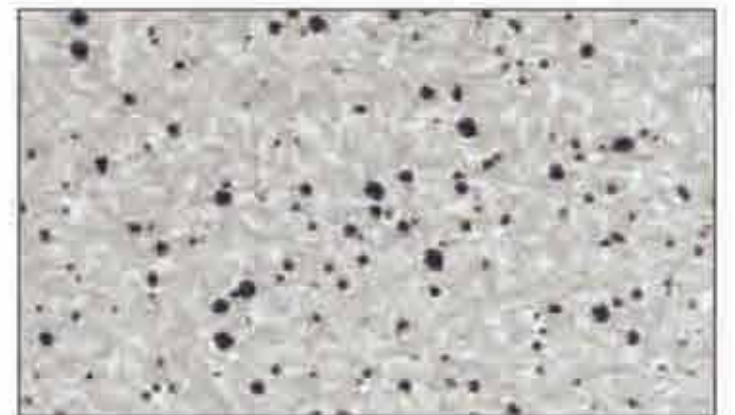
8120



8194-1



8144



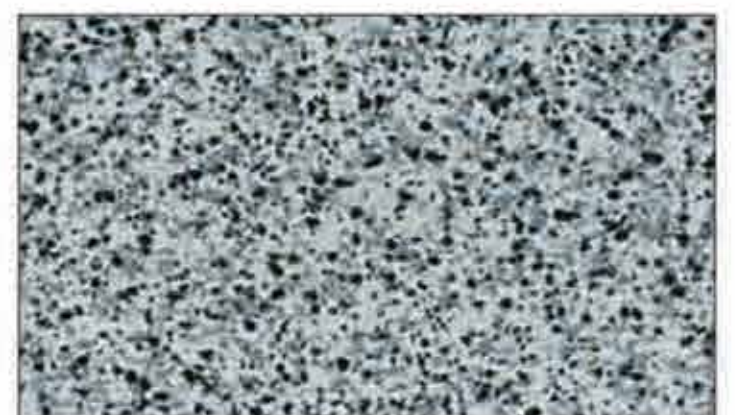
8138



8137



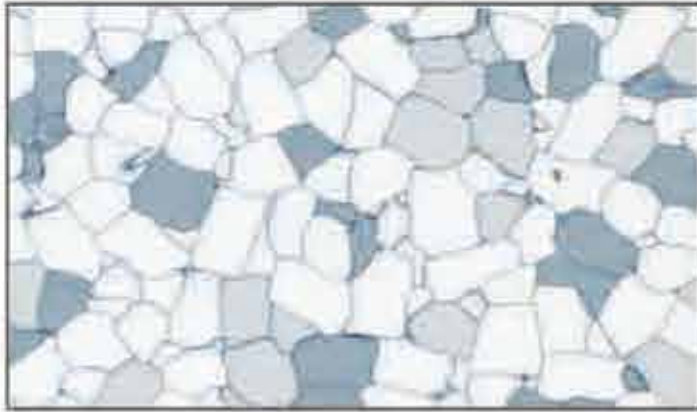
8119



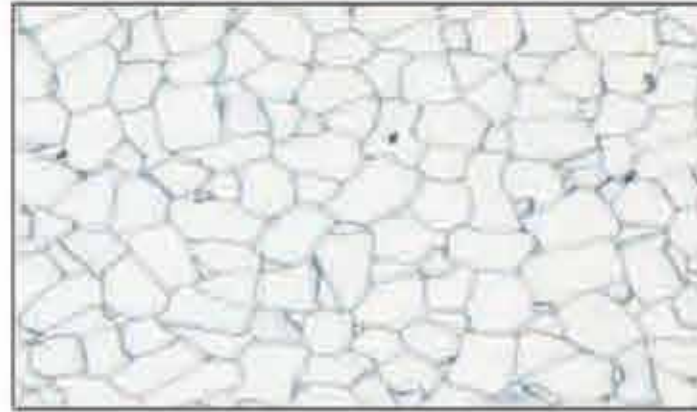
8117



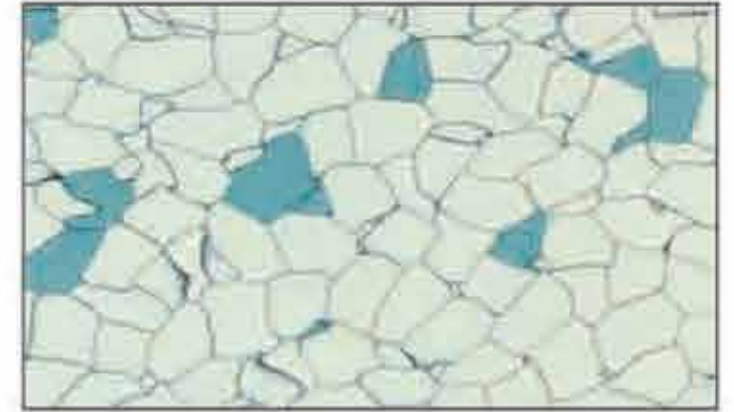
## Conductive Vinyl tile



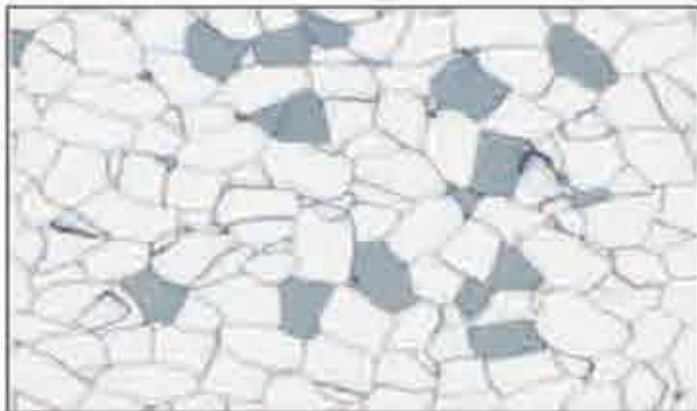
ZT-1101



ZT-1103



ZT-02



ZT-04



ZT-909



ZT-9022

## Ceramic tile



5001



5002



5003

## Timber



4801



4802



4803



4804



4805



4806